

# Prescribed Fire Management in Santa Cruz

Tim Reilly

Environmental Scientist  
California State Parks



# FIRE MANAGEMENT PROGRAM AREAS



- PRESCRIBED BURNING
- WILDFIRE PLANNING





# Why we burn





# Fire Effects on Plant Communities

- Recycles nutrients
- Creates cavities in trees
- Reduces litter layer
- Eliminates low branches and suckers
- Kills pathogens
- Creates “seed beds”
- Stimulates germination
- Adds complexity
- Fuel Reduction





*“To provide for the health, inspiration and education of the people of California by helping to preserve the state’s extraordinary biological diversity, protecting its most valued natural and cultural resources, and creating opportunities for high-quality outdoor recreation.”*



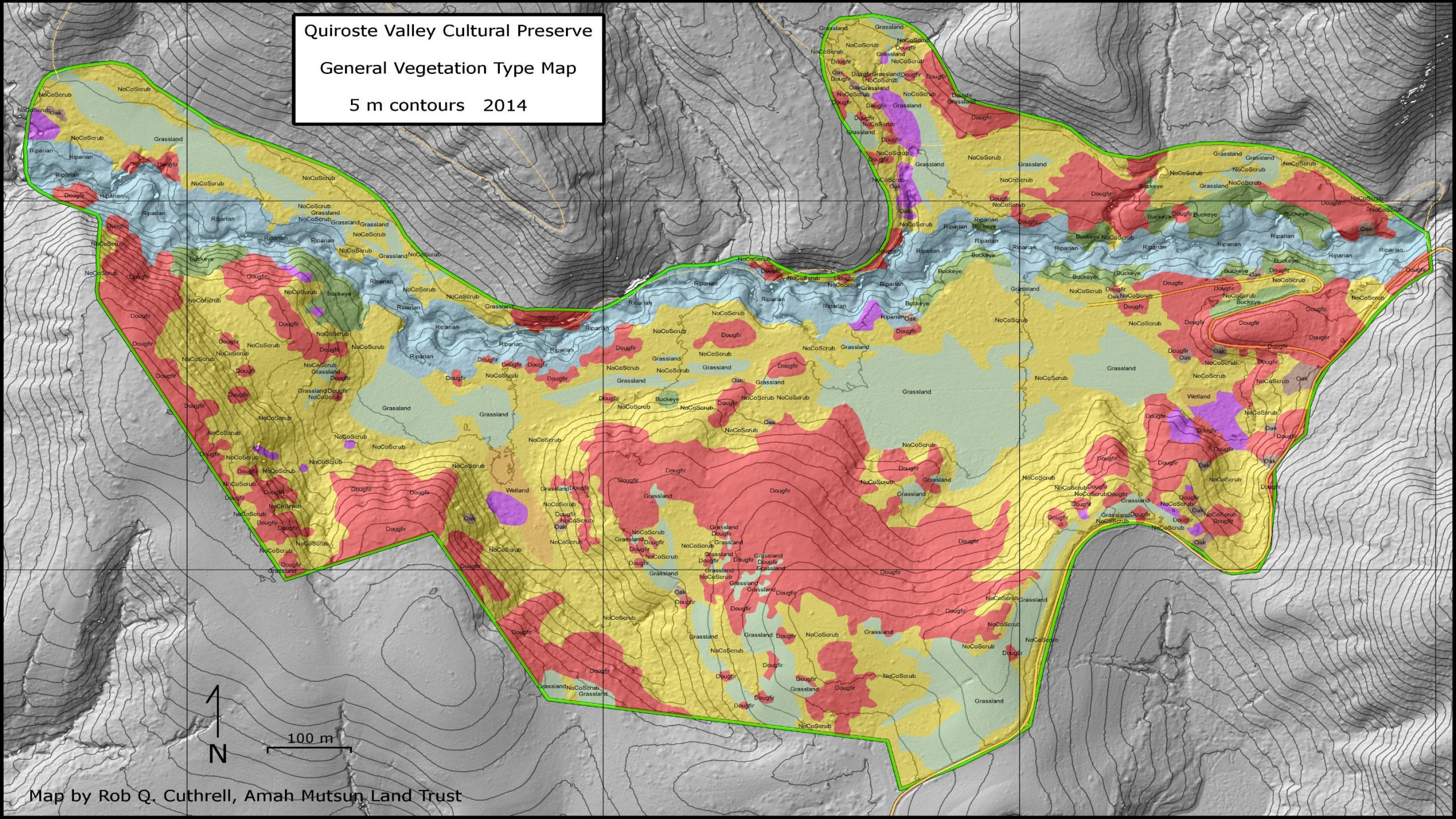




# Quiroste Valley Cultural Preserve

## General Vegetation Type Map

5 m contours 2014





# Where we burn

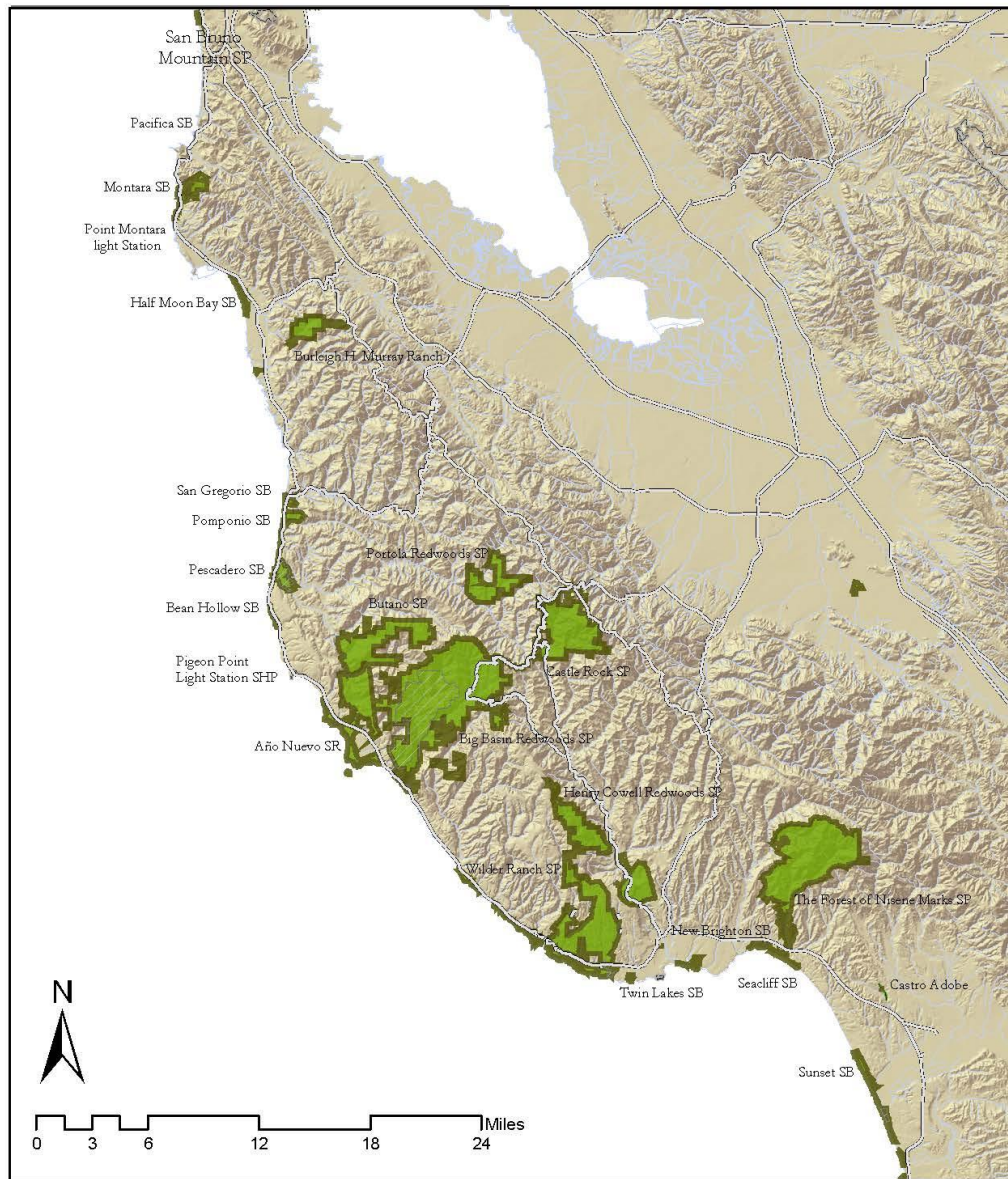
## Annual District Rx Burn Projects

Wilder Ranch SP 300-500ac

Año Nuevo SR 50-150ac

Big Basin SP 150-300ac

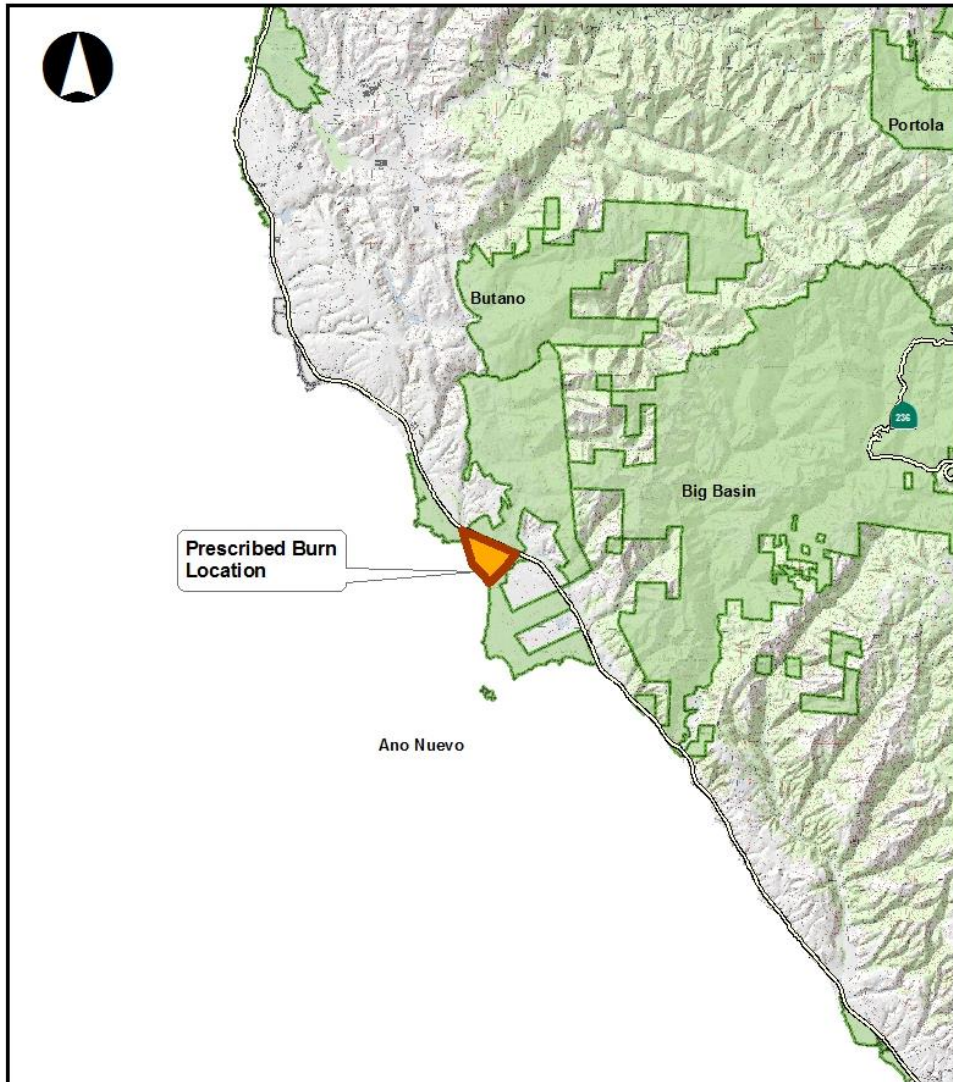
Henry Cowell SP 10-12ac



— Santa Cruz District, California State Parks —



# Año Nuevo State Park



**Año Nuevo State Reserve  
Whitehouse Creek Prescribed Burn  
Project Location Map  
Summer/Fall 2013**

0 0.5 1 2 3 4 Miles





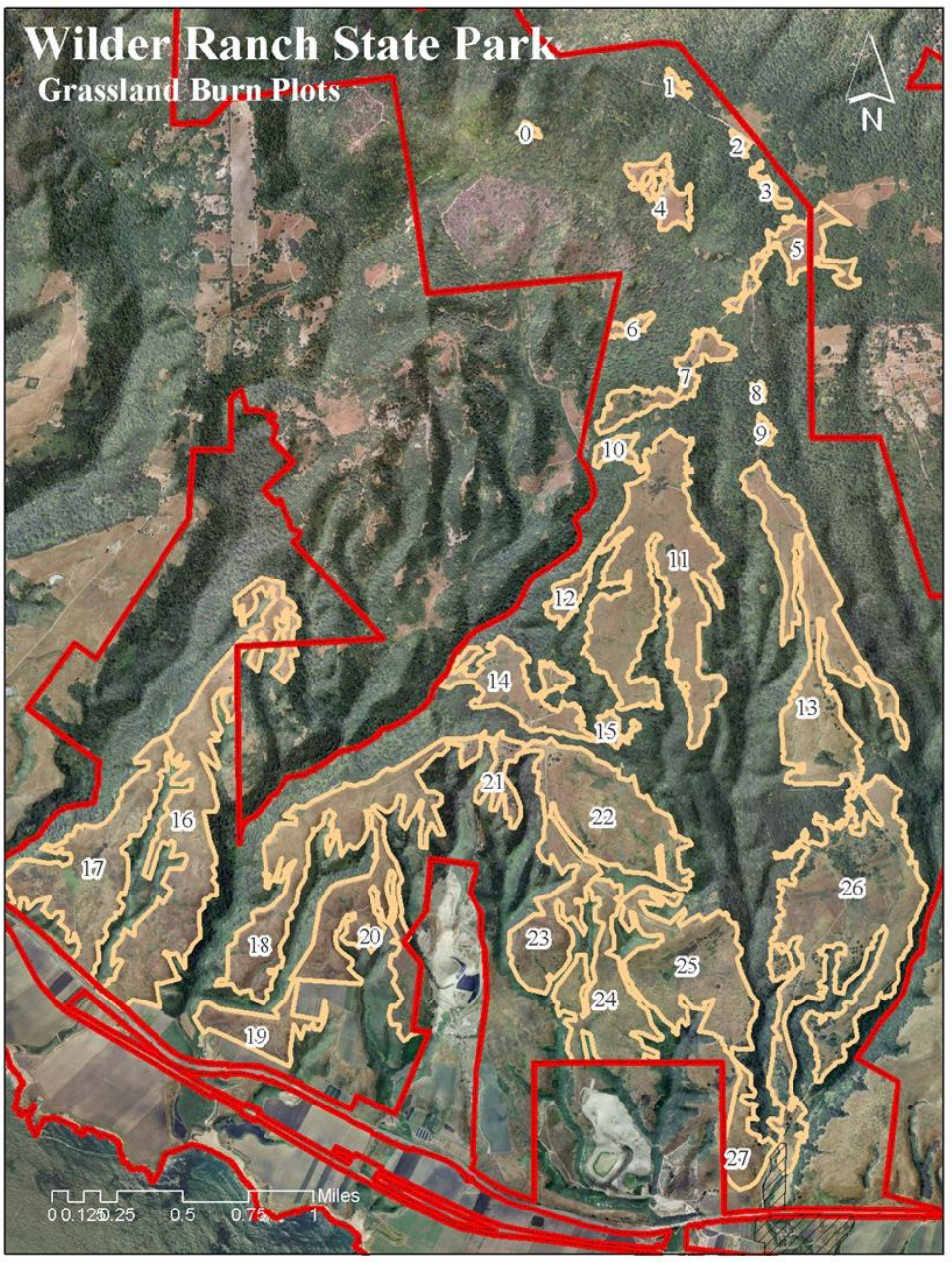






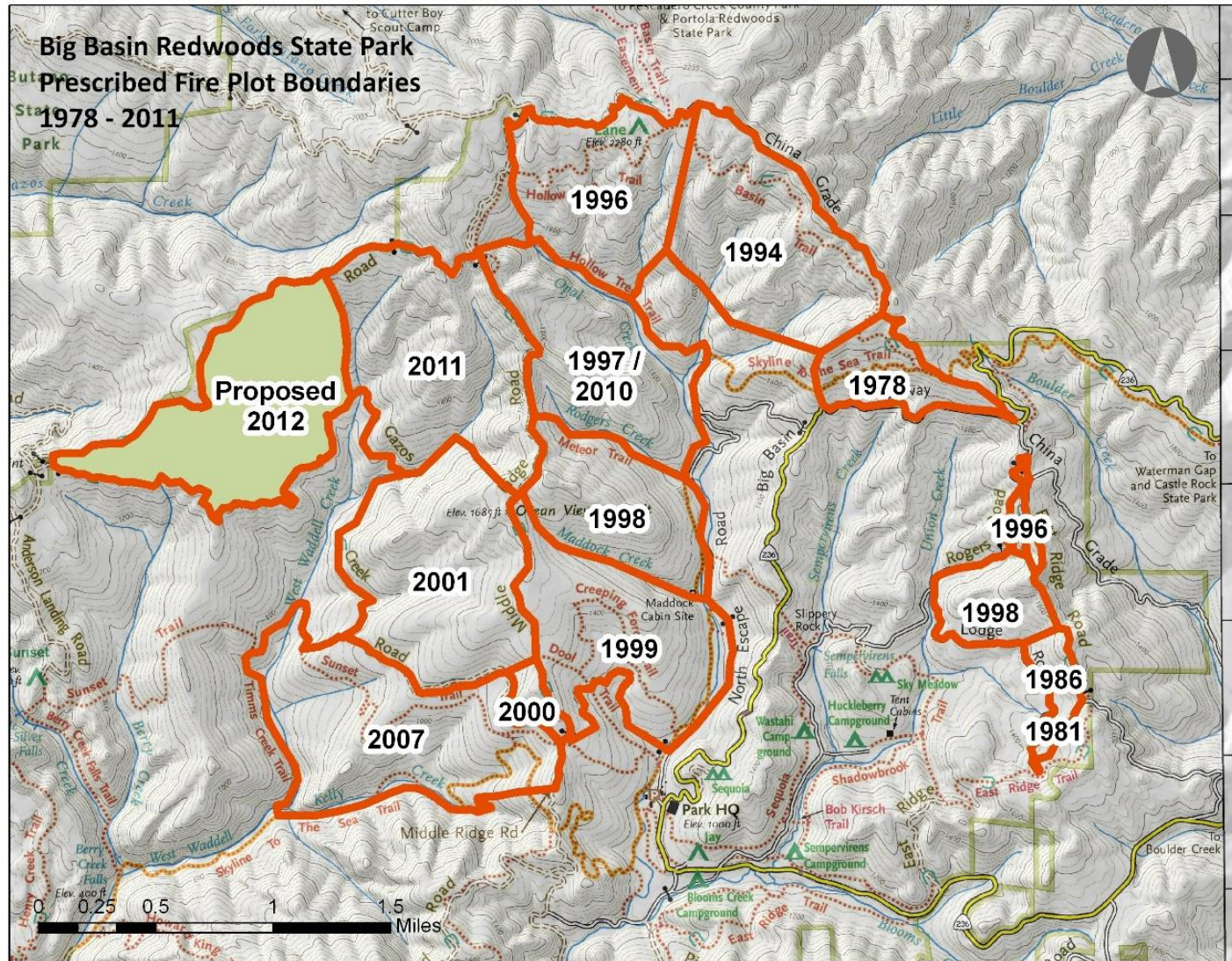






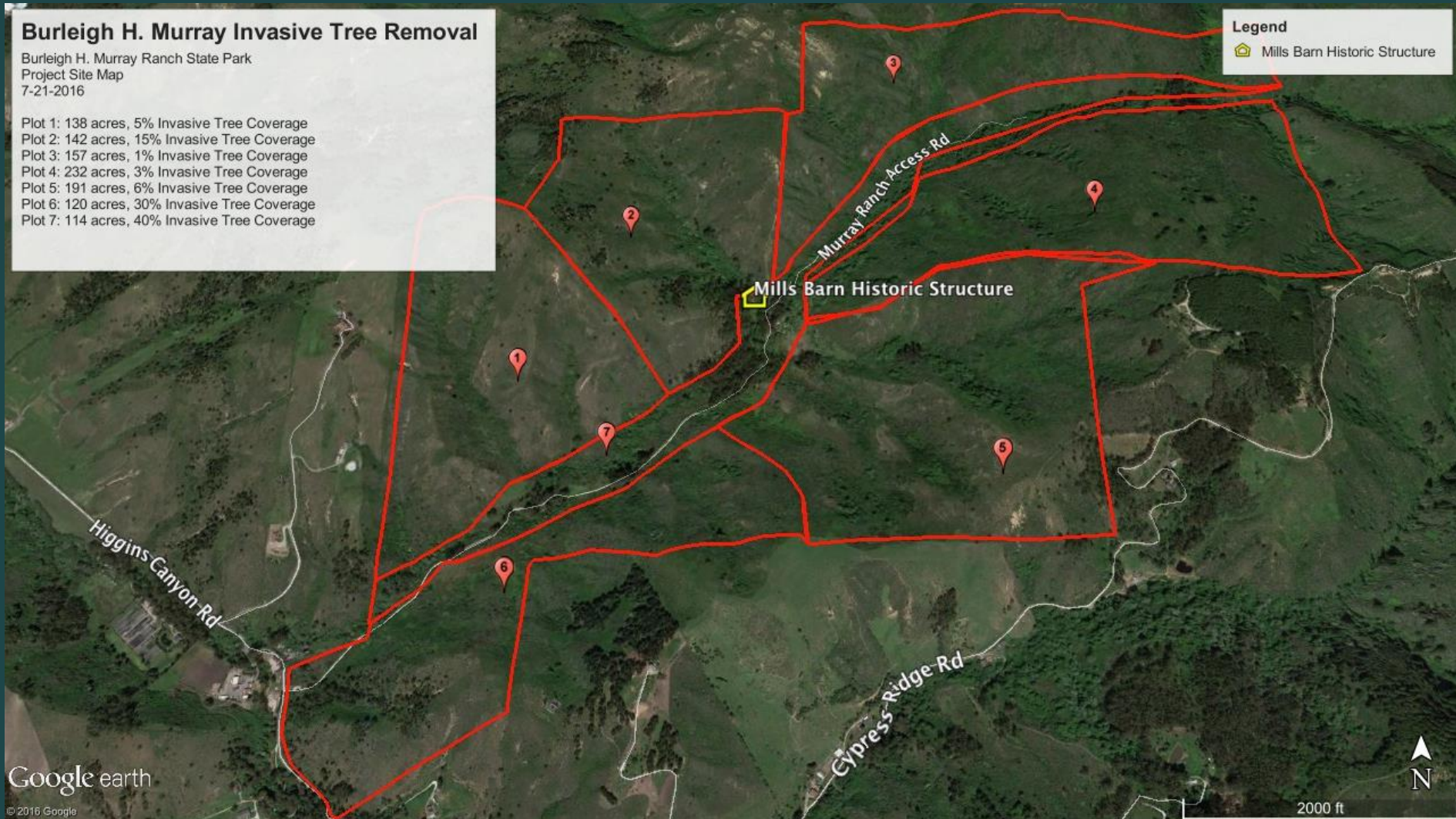


# Big Basin Redwoods State Park



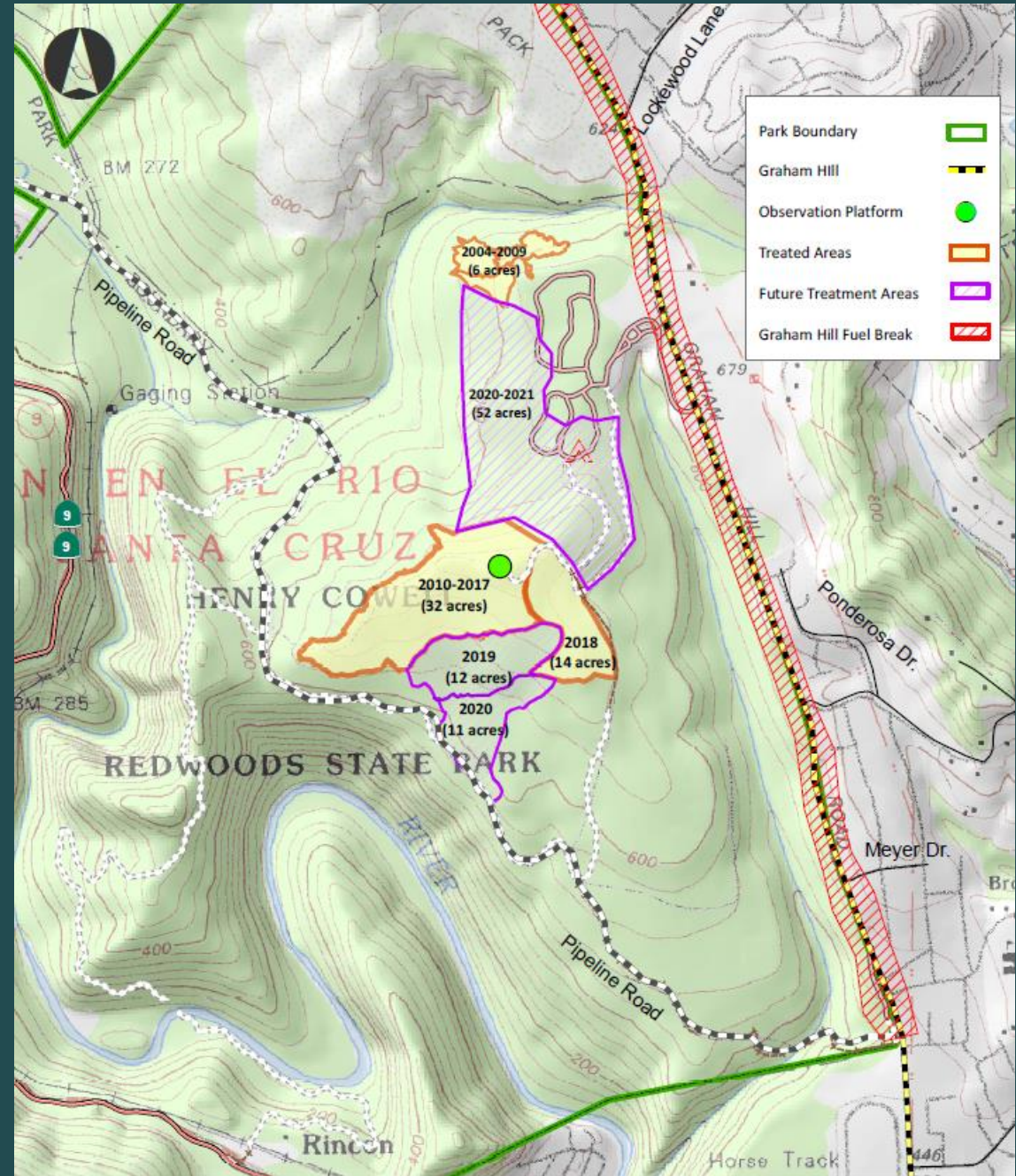


# Burleigh Murray SP





# Henry Cowell Redwoods State Park





# 2016 Cowell

2016 VMP Plot

Updated 04/08/2016



Google earth

© 2016 Google



300 ft











# Environmental Prescription

- Relative Humidity 25-80%      Drier end 25-29%
- Temperature 45-90 degrees      Hotter end 80-90 degrees
- Wind Speed 0-10 mph      Higher end 6-10 mph

\*Out of prescription if any two environmental conditions are at the drier/hotter/higher end of prescription















# Challenges

- Closing Windows
- Urban Sprawl
- \$
  - Planning/Implementation
- Need for Increased Trained Staff
- Air Quality Issues
- Education
- What you can do to help?





# The Forest of Nisene Marks







# For Your Safety: Trail and Road Closures for Emergency Fuel Reduction Project



The Upper Aptos Creek/Buzzard Lagoon Roadside Fuelbreak Project is a result of Governor Newsom's Emergency Proclamation of Wildfire Risk which directed CAL Fire to immediately address areas with high risk of potential extreme fires. Due to public safety hazards from heavy equipment operations, temporary trail and road closures are necessary, but the park remains open.

### Closures:

The Forest of Nisene Marks State Park, including sections of:

- Aptos Creek Fire Road (Phase I & II)
- Buzzard Lagoon Road (Phase I)
- Hinckley Ridge Road (Phase III)

The Soquel Demonstration State Forest, including sections of:

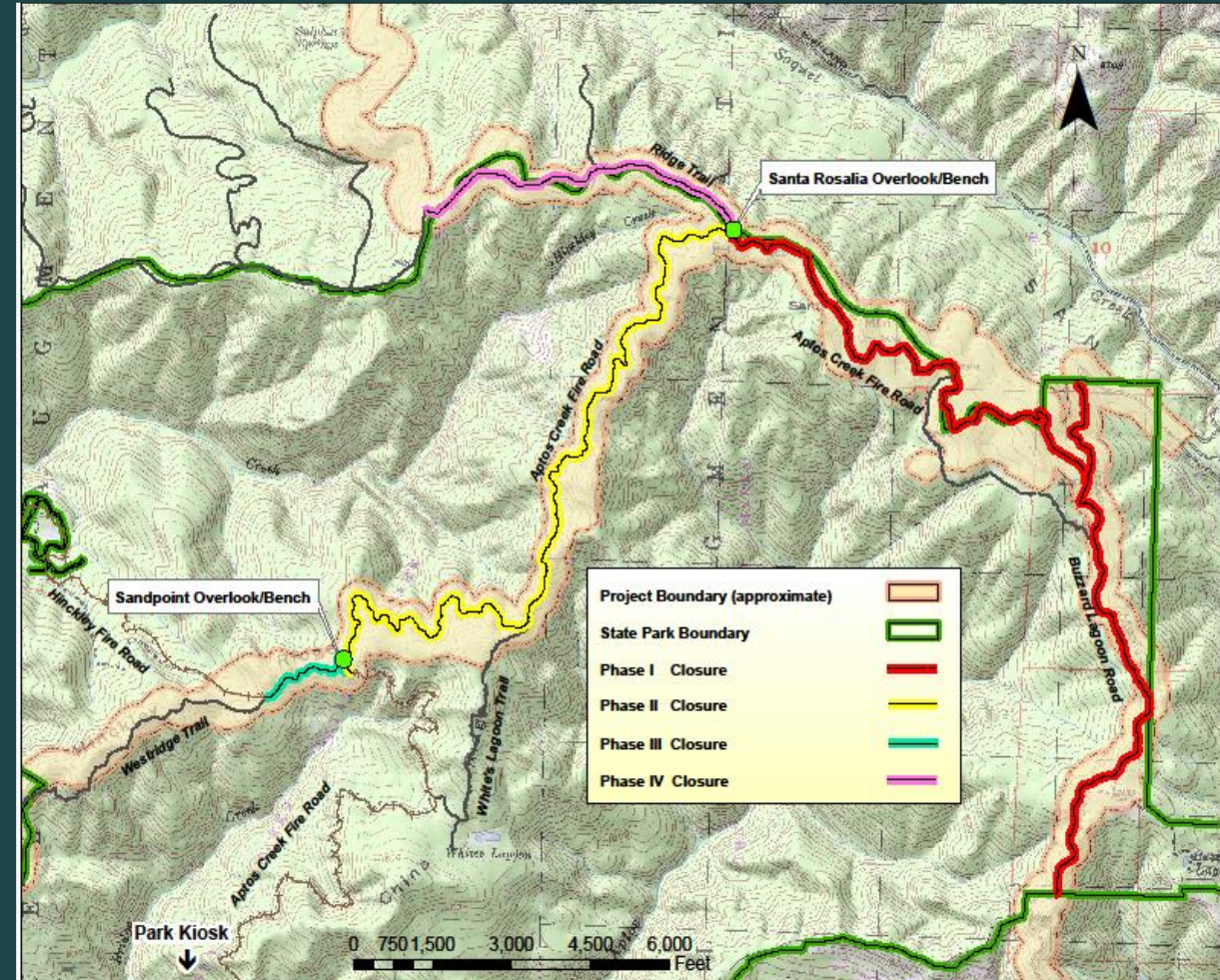
- Ridge Trail (Phase IV)

### In Effect:

July 15 until Fall rains begin; Monday--Friday: Daylight Hours

For local closure updates, visit [www.parks.ca.gov/ForestofNiseneMarks](http://www.parks.ca.gov/ForestofNiseneMarks)

For more information on this statewide project, visit [www.fire.ca.gov](http://www.fire.ca.gov)

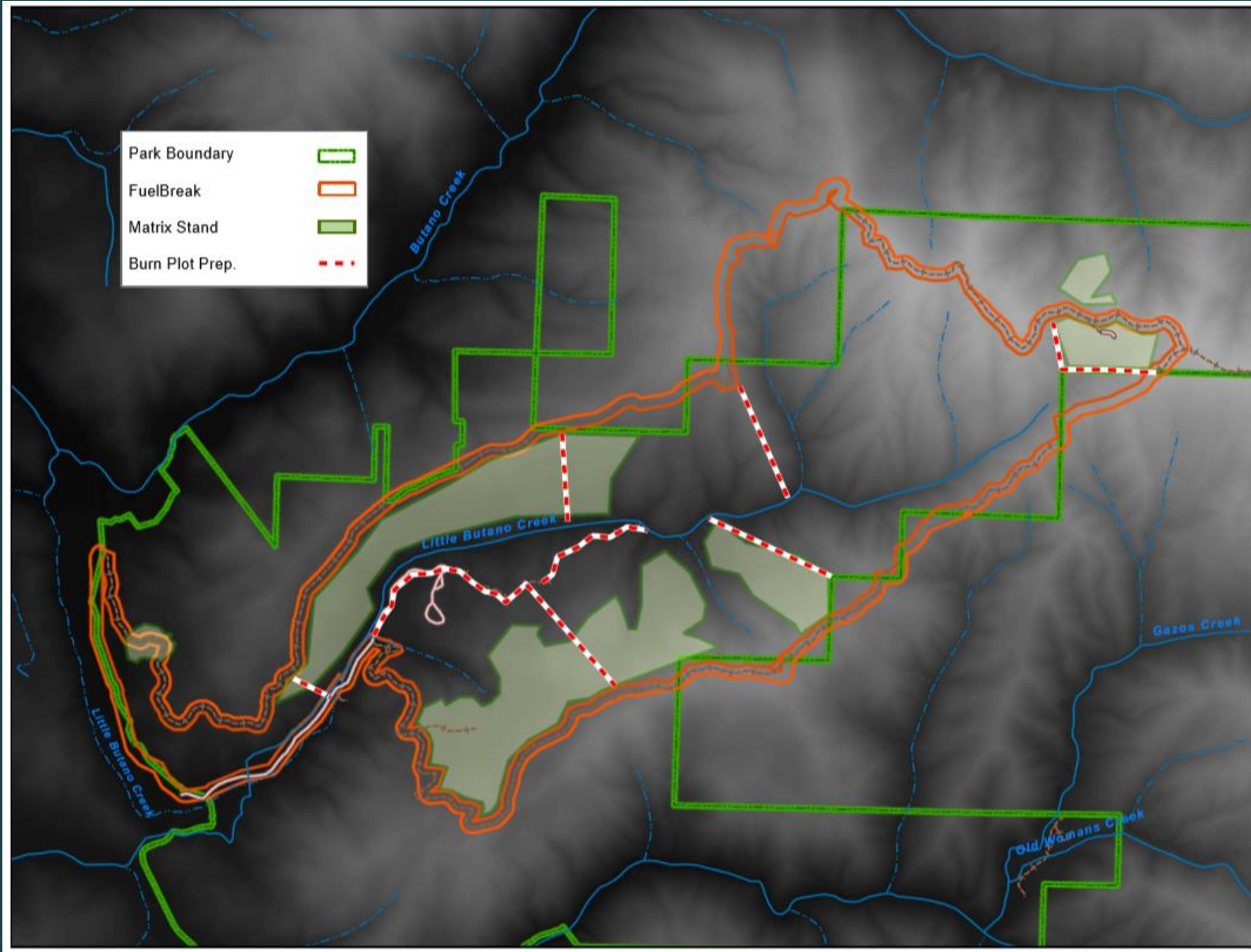


Only the beginning.....









DRAFT as of 10/09/19





California State Parks - Santa Cruz Fire Management

Create Page @Username

Home

- About
- Photos
- Reviews
- Videos
- Notes
- Posts
- Events
- Services
- Shop
- Groups
- Offers
- Jobs



Like Follow Share ...

+ Add a Button

Create Live Event Offer Job

No Rating Yet



Write a post...

Photo/Video Feeling/Activ... Check in ...



Boost a Post

Reach more people and get more reactions, comments and shares

Our Story

The Santa Cruz District Fire Management Team conducts prescribed fires primarily in diverse native g...